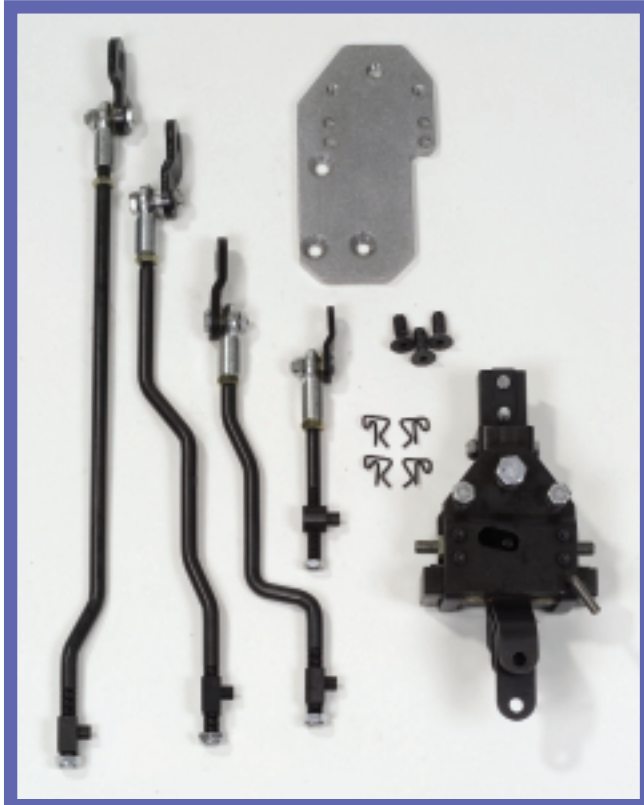


LONG

SHIFTERS



LONG HR-6000 6-SPEED SHIFTER FOR RICHMOND ROD TRANSMISSION

Features

- The Long Shifter for the Richmond gear 6-Speed has a patented rail slide design, used widely on road race and street applications.
- The Long H-Pattern 6-Speed is the only one of its kind to use a reverse lock-out. To engage reverse from neutral position; pull handle to extreme right, push down and pull back handle.
- Long Shifters use 7/16" diameter heavy duty rods for more rigidity and less deflection, for a more positive shift. The HR series rods use aircraft type hymen rod ends.
- The Shifter Handle is spring loaded for a better feel of the gear position.
- Also available for corvette and camaro applications.

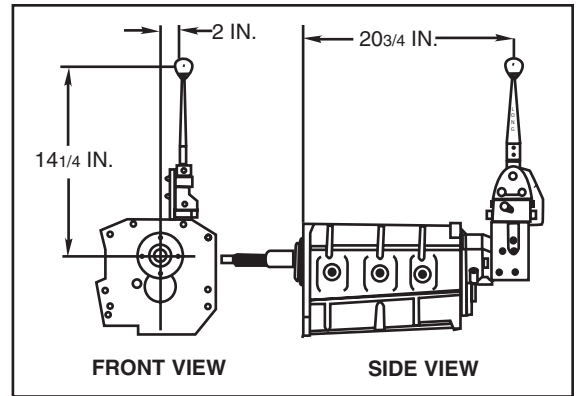


**HR-6000 Shifter shown with the
Richmond ROD Transmission**

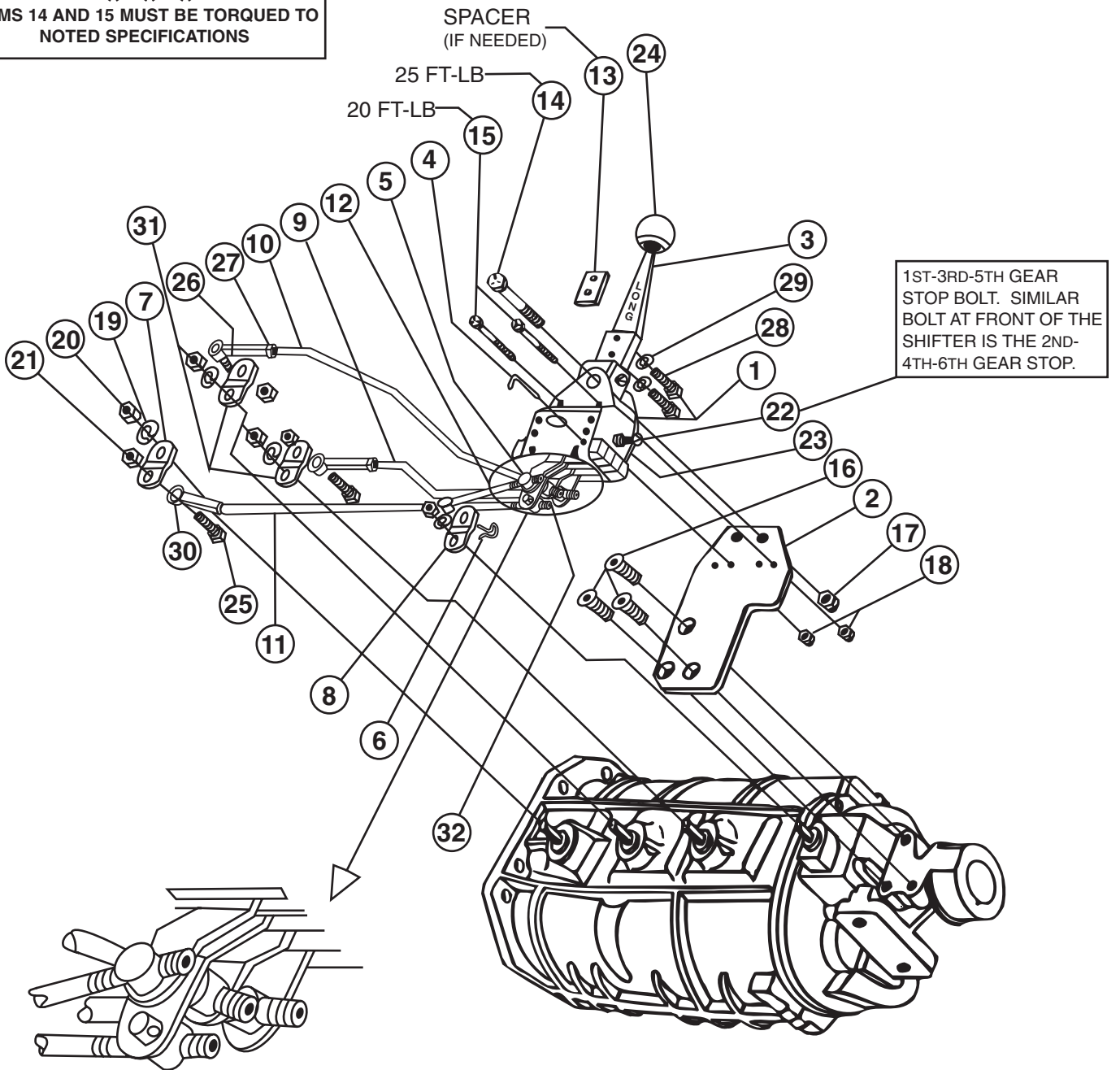
HR-6000

FITS MOST APPLICATIONS

PATENT NUMBER 4,781,074



*** * ***
ITEMS 14 AND 15 MUST BE TORQUED TO NOTED SPECIFICATIONS

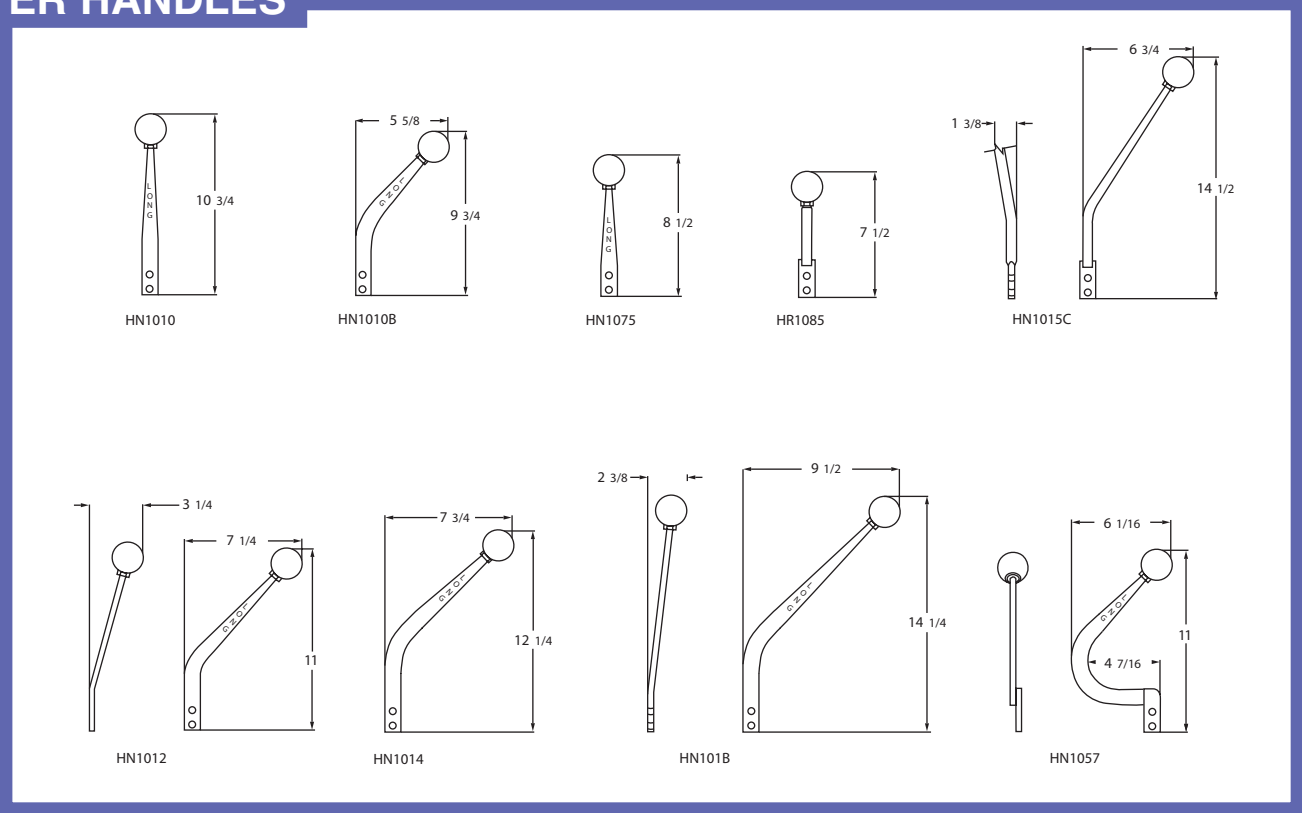


ACCESSORIES

SHIFTER KNOBS



SHIFTER HANDLES



150 N. Grant Street
Cleona, PA 17042

Telephone: 717-202-8360
Fax: 717-202-8373
www.longshifters.com